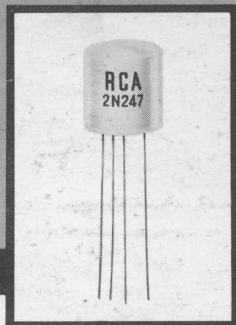




HAM TIPS



A PUBLICATION OF THE RCA ELECTRON TUBE DIVISION

VOL. 20, NO. 1

©1960, RADIO CORPORATION OF AMERICA

JAN.-FEB., 1960

A TWO-TRANSISTOR REGENERATIVE RECEIVER

For 80 and 40 Meters

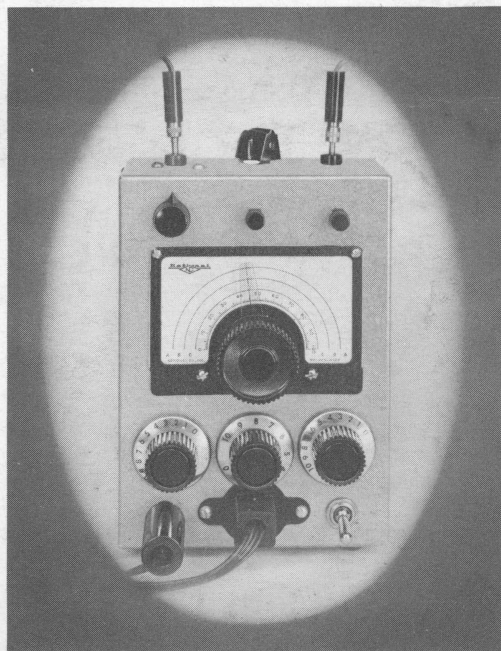
By E. M. Washburn, W2RG*

The operating enjoyment on 80, 40, and 15 meters provided by the transistorized QSO-getter described in my article for the July, 1957, issue of HAM TIPS prompted the construction of a companion transistor receiver.

It seemed desirable that the receiver be a superheterodyne, and literature was searched for a suitable circuit. Although several promising circuits were found, they all had the same shortcoming: they required more transistors and other components than would fit readily into a cabinet as small as the one used for the transmitter. The July, 1957, issue of QST, however, contained a description of a transistorized regenerative "reflex" receiver built by W6WXU. It seemed to provide the answer. This receiver used only two transistors (a 2N107 and a 2N170) and two 1N60 diodes, and was built in a case small enough to be held in the palm of one hand.

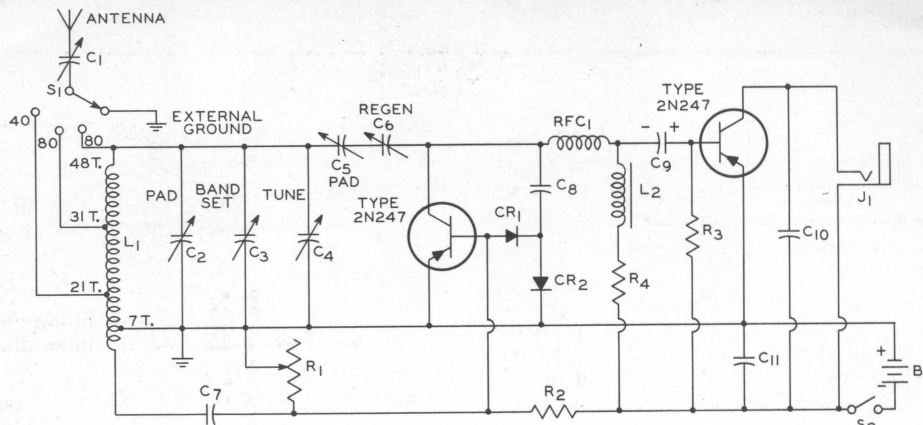
A breadboard receiver was constructed, using the basic circuit of W6WXU's receiver with modifications to suit the components on hand. Two RCA-2N247 p-n-p DRIFT FIELD transistors were used in place of the 2N107 and 2N170, the two diodes were changed to type 1N34's, and a B & W Type 3015 Mini-inductor was used as the antenna coil in place of the hand-wound ferrite-rod antenna used in the original. A small output transformer with primary and secondary connected in series was used instead of the 2-henry choke.

*Manager (Retired), Frequency Control Engineering, RCA, Camden, N. J.



Front view of W2RG's receiver. The two transistors are mounted externally just above bandspread tuning dial.

This breadboard model worked so well that it was rebuilt in a 7- by 5- by 3-inch Minibox, as shown in the accompanying photographs. The receiver covers 3.3 to 8.5 Mc in three ranges which can be adjusted by means of the bandsetting capacitor to provide continuous coverage or separate bandspread coverage



B₁—Battery, 6 volt, heavy duty (RCA-V5009 or equiv.)
 C₁—0-50 μmf , variable
 C₂—7-45 μmf , ceramic variable (Erie type N500 7-45 or equiv.)
 C₃—0-75 μmf , variable
 C₄—0-20 μmf , variable
 C₅—1.5-7 μmf , ceramic variable (Erie type NPO 1.5-7 or equiv.)
 C₆—0-50 μmf , variable

C₇—270 μmf , mica
 C₈—220 μmf , mica
 C₉—8 μf , electrolytic
 C₁₀—0.01 μf , ceramic disc
 C₁₁—0.01 μf , ceramic disc
 CR₁, CR₂—Crystal diode, type 1N34 or equiv.
 J₁—Phone jack, open circuit
 L₁—48 turns, B & W Miniductor #3015, tapped as shown

L₂—AF choke, 2 henrys
 R₁—Bias control, 10,000 ohm potentiometer
 R₂—220,000 ohms, 1/4 watt
 R₃—270,000 ohms, 1/4 watt
 R₄—270 ohms, 1/2 watt
 RFC₁—2.5 millihenrys, rf choke
 S₁—Wafer switch, single-pole, four position
 S₂—On-off switch, SPST

Figure 1: Schematic diagram and parts list of W2RG's two-transistor 40- and 80-meter receiver.

for the upper and lower halves of the 80-meter band and for the 40-meter band.

Circuit Description

The circuit of the receiver is shown in Figure 1. The rf section includes the antenna coil L₁; the padding, bandsetting, and tuning capacitors C₂, C₃, and C₄, respectively; the first type 2N247 transistor; the two crystal diodes, and the regeneration-control capacitors C₅ in series with C₆. The remaining components comprise the "reflex" and af-amplifier portions of the receiver. R₁ controls the bias on both transistors. According to the description of W6WXU's receiver in QST, the first transistor acts as a regenerative amplifier feeding the two series-connected crystal diodes. The af voltage appearing across the grounded diode is fed back to the first transistor (through the base), amplified, and re-amplified in the second transistor. We have not questioned this very brief explanation because one thing is certain: the receiver works beautifully.

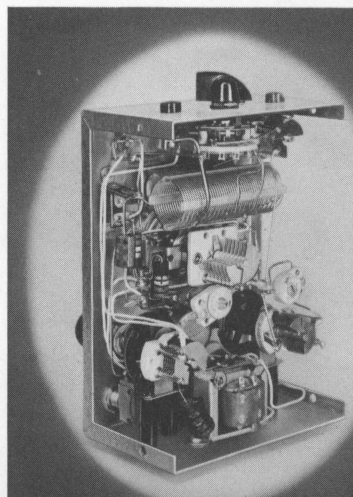
Construction Details

The arrangement of the major controls and components is shown on page 1 in the front view of the completed receiver. From left to right across the top of the cabinet are the

antenna jack, band-selector switch (S₁), and ground-connection jack. Above the tuning dial are the antenna-trimmer capacitor C₁, and the two RCA-2N247 transistors. Just below the dial are the band-setting capacitor C₃, the transistor-bias control R₁, and the regeneration control C₆, and across the bottom are the phone jack, power-supply connector, and ON-OFF switch S₂.

The photographs on pages 2 and 3 show the internal construction. Hand-capacitance effects in tuning are eliminated by the National dial for the band-spread capacitor, and by the use of flexible couplings and bakelite extension shafts for the antenna-trimmer, band-setting, and regeneration-control capaci-

Inside view of the receiver, showing placement of major components.



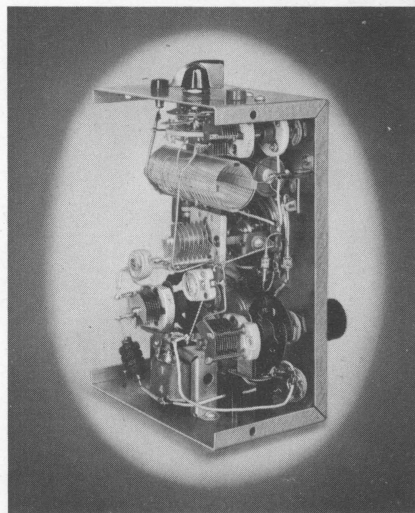
tors. To assure mechanical stability, the antenna-trimmer, band-setting, and regeneration-control capacitors are rigidly mounted on brackets and stand-off insulators, and smaller components are supported by heavy bus-bar wire.

All 48 turns of the B & W Type 3015 Mini-inductor are used for the antenna coil, L_1 . Turns adjacent to the two tap points and the ground connection are depressed to permit clean soldering of connections at these points without danger of shorted turns. The electrolytic capacitor, band switch, flexible couplings, and resistors shown in the photographs are larger than necessary, because I simply used whatever parts were at hand.

Operation

The only power supply needed for the receiver is a 6-volt battery, which may be the same as that used for the transmitter. Al-

Inside view of the receiver, showing mounting of the two-crystal diodes.



tain smooth control of oscillation. Phones having a dc resistance of about 135 ohms, such as the Trimm Z-300, are satisfactory and provide plenty of volume on most ham signals, even with a 6-foot antenna.

To avoid burnout of the transistors, it is absolutely essential that the bandswitch be set in its "EXTERNAL GROUND" position before transmitting, and whenever the receiver is not being used. If even a moderately high-power transmitter is being used in the vicinity of the receiver, the receiving antenna should be disconnected.

When the receiver is first turned on, its tuning drifts slightly, and both the bias and regeneration controls may require readjustment. During transmitting periods, the receiver frequency tends to move upwards, so that when you turn it over to the other chap and throw the band-selector switch to either the 40- or 80-meter band, you have to retune slightly in the downward direction.

Nevertheless, the receiver has proved to be well worth the effort and expense that went into its construction. With its companion 300-milliwatt transistorized transmitter, it has provided many two-way QSO's over distances up to 1,000 miles, and many European ham stations on 40 meters have been copied during evening hours.

Modifications

If operation from a 12-volt battery is desired, the circuit should be modified as shown in Figure 2, and either an RCA-2N408 or -2N109 transistor used in place of the 2N247 in the output stage of the receiver.

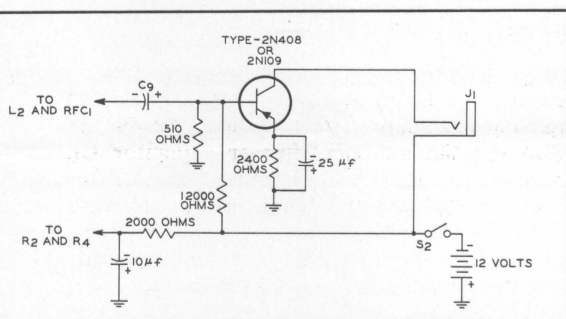


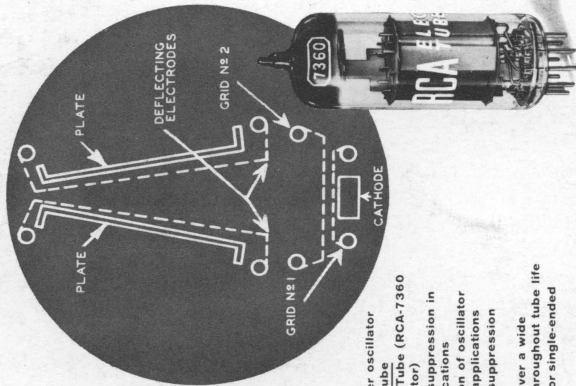
Figure 2: Modified output circuit for operation of W2RG's receiver with 12-volt dc supply.

though an antenna may not be necessary, a good external ground connection is essential to eliminate phone-cord body-capacitance effects. If an antenna is used, it should be only a very short length of wire—not the transmitting antenna—and should be very loosely coupled to the antenna coil.

The receiver performs best on CW signals. For most stable performance, the bias and regeneration controls should be advanced well beyond the threshold of oscillation. For very weak signals, it will be necessary to work closer to the oscillation point. For phone signals, as in any regenerative receiver, the regeneration control should be set just below the oscillation point. Weak phone signals, however, are difficult to copy.

High-resistance headphones should not be used with the receiver because they cause motor-boating and make it difficult to main-

New RCA Beam-Deflection Tube... Simplifies SSB!



- Balanced modulator-carrier oscillator functions within a single tube
- Product-Detection in One Tube (RCA-7360 needs no separate oscillator)
- At least 60 db of carrier suppression in balanced-modulator applications
- At least 40 db suppression of oscillator signal in balanced-mixer applications
- At least 80 db of carrier suppression in filter type SSB exciters
- "Stay-put" circuit tuning over a wide temperature range, and throughout tube life
- Push-pull *r_f* or *a_f* output for single-ended input — with one tube.

Specifically developed for SSB and DSB suppressed-carrier rigs, RCA-7360 is the small-but-mighty tube that can "double-up" on a number of exciter functions at frequencies up to 100 Mc. It simplifies circuitry—makes it practicable to use inexpensive components.

Here's how it operates! The cross-section shows the main elements of the RCA-7360. The single flat cathode, control grid, and screen grid form an electron gun which generates, controls, and accelerates a beam of electrons. The total plate current to the two plates (at a given plate voltage) is determined by the voltages applied to the control grid and the screen grid. This total plate current varies with the bias or signal voltage on the control grid as in any conventional tube. The division of the total current between the two plates is determined by the difference in voltage between the two deflecting electrodes.

RCA-7360's are now available at your RCA Industrial Tube Distributor. For a technical bulletin on RCA-7360, see your RCA Industrial Tube Distributor. Or write RCA, Commercial Engineering, Harrison, N. J.

RCA
RADIO CORPORATION OF AMERICA
Electron Tube Division
Harrison, N. J.

ANOTHER RCA
CONTRIBUTION TO
COMMUNICATIONS



IT'S ELECTRONICS
ALL BARBEY'S FIRST

BLK. RT.



From your local
RCA distributor,
headquarters for
RCA receiving
and power tubes.

RCA HAM TIPS
is published by the
RCA Electron Tube
Division, Harrison,
N. J. It is available
free of charge from
RCA distributors.

Harvey Slovik, Editor

GEORGE D. BARBEY
Reading Lancaster
POTTSTOWN
Lebanon
CO., INC.

FORM 3547 REQUESTED

Information furnished by the Radio Corporation of America is believed to be accurate and reliable. However, no responsibility is assumed by RCA for its use; nor for any in-

fringements of patents or other rights of third parties which may result from its use. No license is granted by implication or otherwise under any patent or patent rights of RCA.